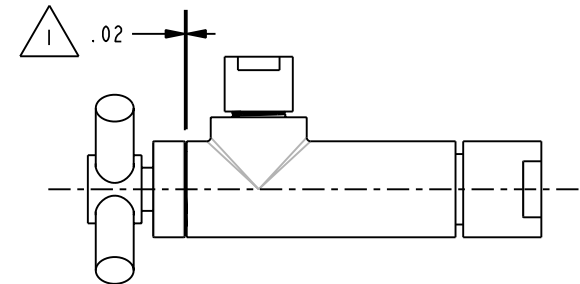
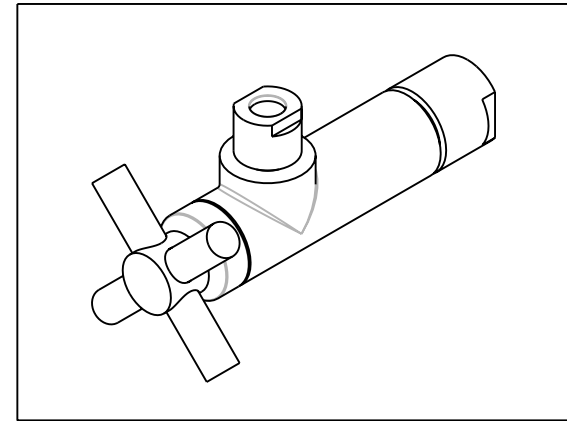
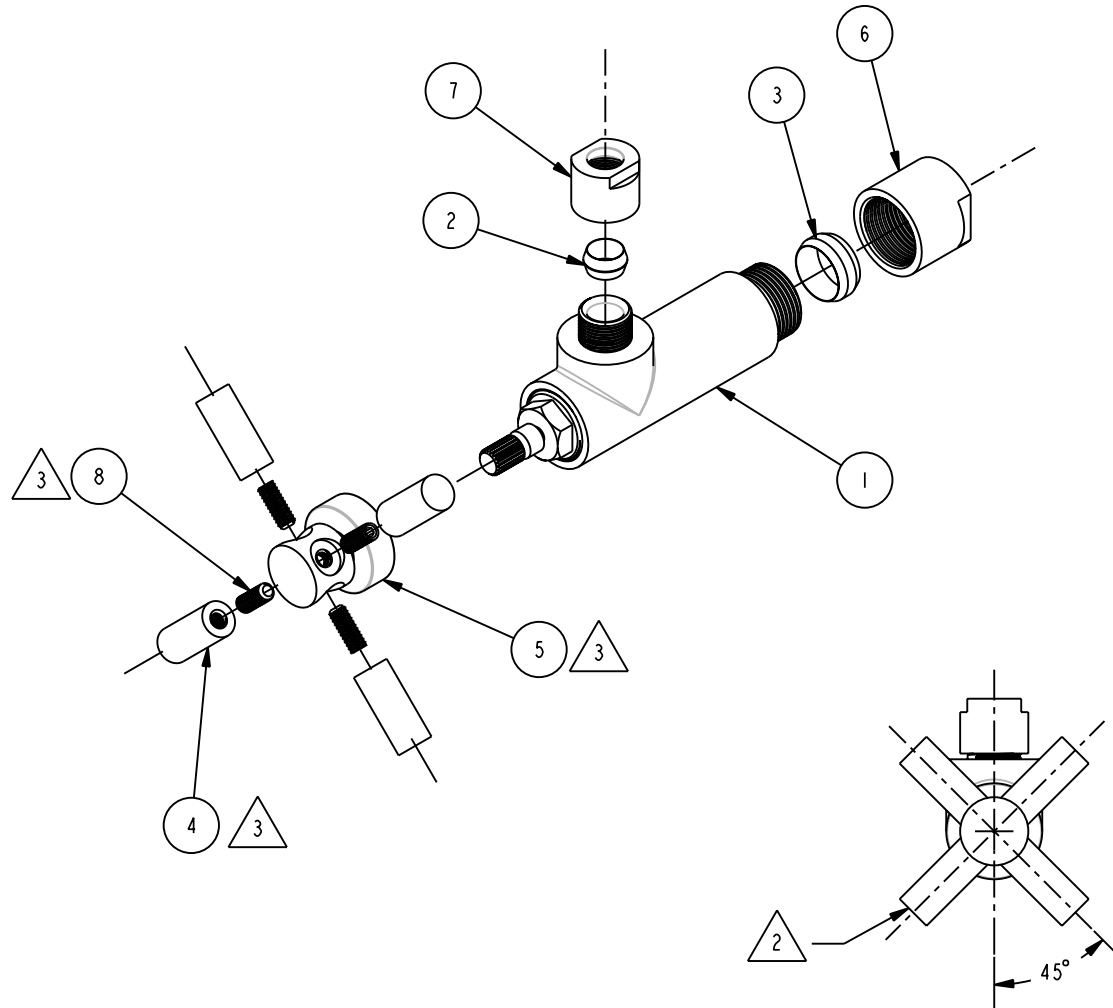


- 1 CLEARANCE GAP AFTER INSTALLATION
- 2 HANDLE ORIENTATION WHEN VALVE OPENED
- 3 USE ITEM 8 TO SECURE ITEM 5 TO CARTRIDGE STEM FIRST. THEN APPLY LOCTITE 680 OR EQUIVALENT BETWEEN ITEM 8 AND ITEM 4 BEFORE INSTALL THEM TOGETHER

| BILL OF MATERIAL (CURRENT LEVEL) | | | | |
|----------------------------------|---------|-----------------------------|----------|------|
| ITEM | PT/ASSY | DESCRIPTION | TYPE | QTY. |
| 1 | 6-034 | BODY ASSY, ANGLE, ROUND | ASSEMBLY | 1 |
| 2 | 50359 | COMPRESSION RING | PART | 1 |
| 3 | 50362 | COMPRESSION RING | PART | 1 |
| 4 | 50733 | SPOKE | PART | 4 |
| 5 | 50737 | CROSS HANDLE HUB | PART | 1 |
| 6 | 50741 | NUT, 13/16-18 UNS-2B THREAD | PART | 1 |
| 7 | 50742 | NUT, 9/16-24 UNEF-2B THREAD | PART | 1 |
| 8 | 92087 | SET SCREW 10-24 X 1/2" | PART | 4 |



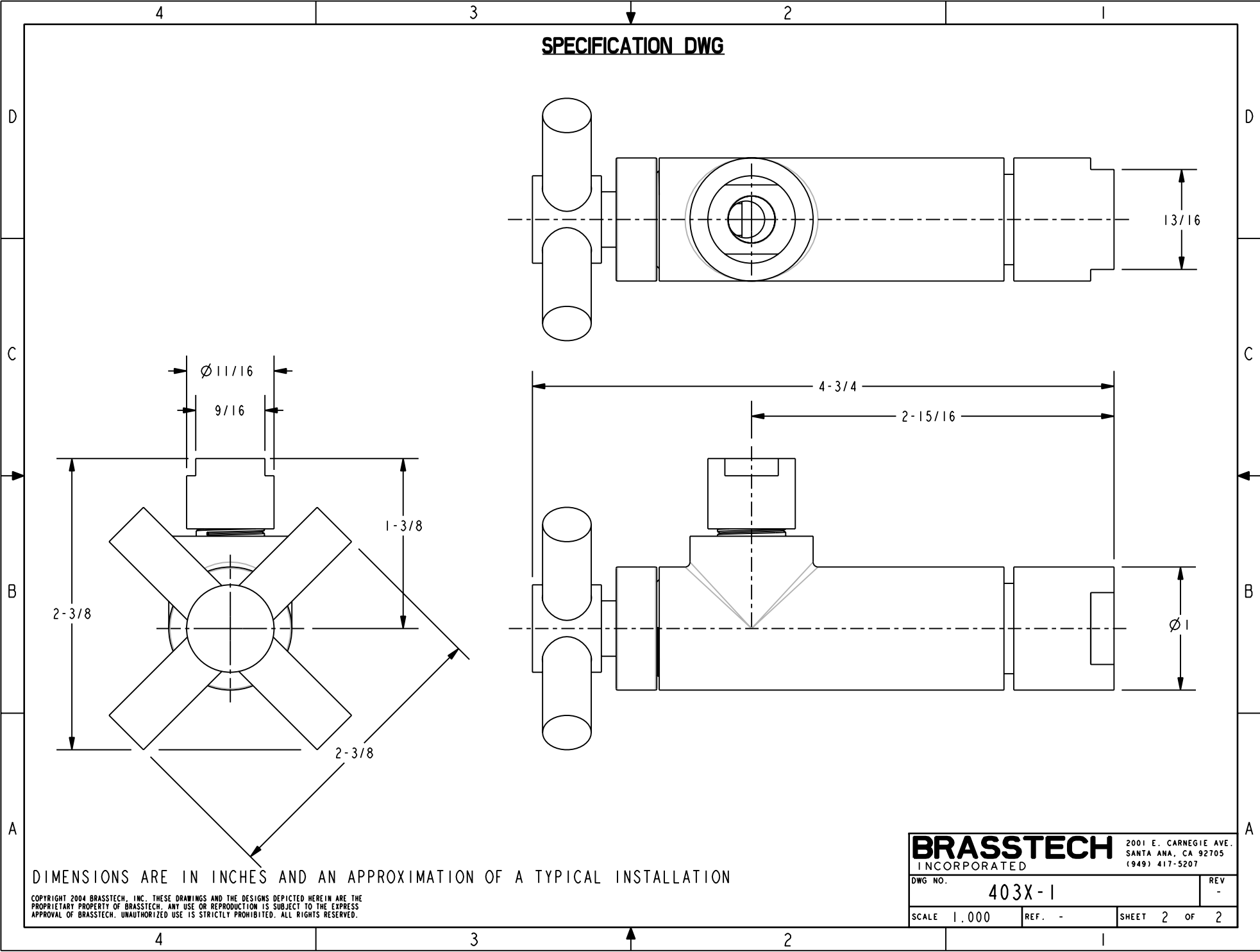
COPYRIGHT 2003 BRASSTECH, INC. THESE DRAWINGS AND THE DESIGNS DEPICTED HEREIN ARE THE PROPRIETARY PROPERTY OF BRASSTECH. ANY USE OR REPRODUCTION IS SUBJECT TO THE EXPRESS APPROVAL OF BRASSTECH. UNAUTHORIZED USE IS STRICTLY PROHIBITED. ALL RIGHTS RESERVED.

BRASSTECH
INCORPORATED
2001 E. CARNEGIE AVE.
SANTA ANA, CA 92705
(949) 417-5207

ANGLE VALVE, CROSS CONTEMP.
1/2" TUBE INLET, 3/8" TUBE OUTLET

| | | | | | |
|------------|--------|--------------|-----|----------|----------|
| ASSY. NO. | | 403X-1 | | | |
| SCALE .333 | REF. - | SHEET 1 OF 2 | REV | REV DESC | DATE |
| | | | | EO-0392 | 07/20/04 |

SPECIFICATION DWG



DIMENSIONS ARE IN INCHES AND AN APPROXIMATION OF A TYPICAL INSTALLATION

COPYRIGHT 2004 BRASSTECH, INC. THESE DRAWINGS AND THE DESIGNS DEPICTED HEREIN ARE THE PROPRIETARY PROPERTY OF BRASSTECH. ANY USE OR REPRODUCTION IS SUBJECT TO THE EXPRESS APPROVAL OF BRASSTECH. UNAUTHORIZED USE IS STRICTLY PROHIBITED. ALL RIGHTS RESERVED.

| | | | |
|------------------|--------|-----------------------|--------|
| BRASSTECH | | 2001 E. CARNEGIE AVE. | |
| INCORPORATED | | SANTA ANA, CA 92705 | |
| | | (949) 417-5207 | |
| DWG NO. | 403X-1 | REV | - |
| SCALE | 1,000 | REF. | - |
| | | SHEET | 2 OF 2 |