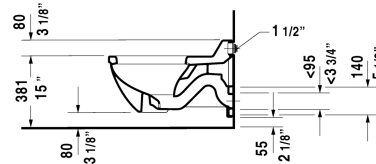
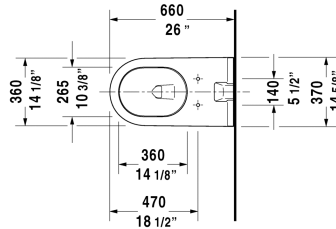
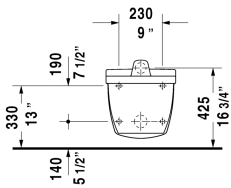


Starck 3 Toilet wall-mounted ♿ # 2560090000

| < 14 5/8" Inch > |



Toilet wall-mounted	Dimension	Weight	Order number
concealed inlet, syphonic, includes inlet spud 1 1/2", horizontal outlet, cUPC® listed*, 1.28 gpf			
Colors			
00 White			
Variant			
♣	14 5/8" x 26" Inch	58.4 lb	2560090000
Infobox			
* Complies with following standards: ASME A112.19.2/CSA B45.1, Wall-mounted toilet is ADA compliant, when installed with a seat height of 17" - 19" from the finished floor			
Sanitary ceramics with the special WonderGliss surface finish will remain clean and attractive-looking for a long time to come. When ordering WonderGliss please add a "1" as eleventh digit to the model number.			
Noise reduction gasket for wall-mounted toilet		0.7 lb	005064
Suitable products			
Toilet seat ring elongated, open front, hinges plastic, without slow close,			006431
Toilet seat ring elongated, open front, hinges plastic, with slow close,			006439
Toilet seat and cover open front, elongated, hinges stainless steel, without slow close,			006601
Toilet seat ring open front, elongated, hinges stainless steel, without slow close,			006211

Starck 3 Toilet wall-mounted  # 2560090000

|< 14 5/8" Inch >|

All drawings contain the necessary measurements which are subject to standard tolerances. They are stated in inch & mm and are non-binding. Exact measurements, in particular for customized installation scenarios, can only be taken from the finished ceramic piece.