

MALIBU II One-Piece Toilet, CEL C-6250

Product Features

- Vitreous china one-piece toilet, with skirted trapway
- Chair-height (16-1/2"), compact-elongated bowl
- MicroGlaze™ anti-microbial, stain-resistant glaze
- 12" (305mm) rough-in
- Rimless wash – large twin jets with open rim to facilitate a powerful flush and better hygiene

EcoQUATTRO™ Flushing System

- High-performance, gravity flush
- 1.28 gallons (4.8 liters) per flush - EPA WaterSense, high-efficiency toilet (HET)
- Fully glazed, 2-1/8" internal trapway
- Oversized 3" flush valve
- Large 9" x 7" water surface area and open rimless bowl for an exceptionally clean bowl

Accessories Included

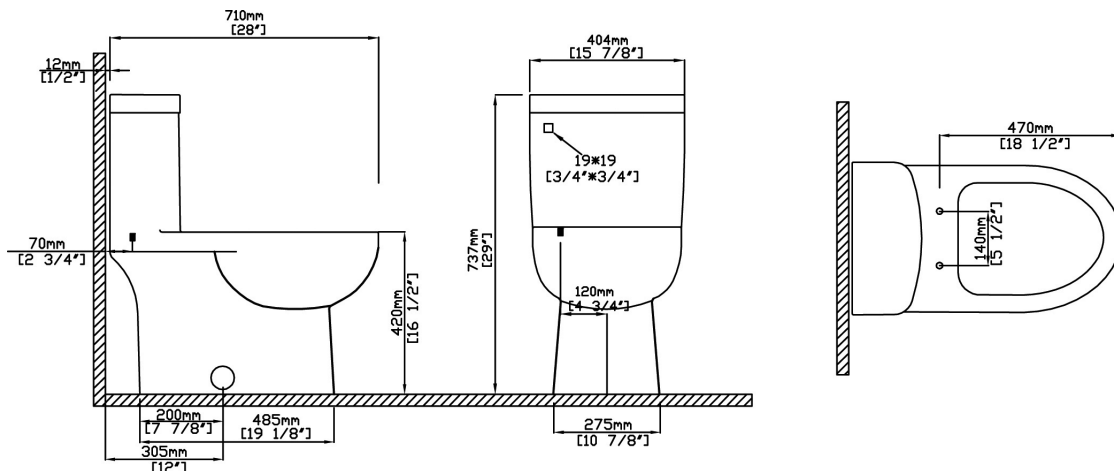
- Silent Close, quick-release seat and cover
- Solid metal trip lever, Polished Chrome finish
- Bolt alcove cover tiles (set of 2)

Quality Assurance

- Factory flush-tested
- Limited lifetime product warranty





Dimensional Diagram




IMPORTANT: Dimensions are nominal and may vary within the range of tolerance per NSI Standard A112.19.2. These measurements are subject to change. No responsibility is assumed for use of superseded or voided pages.

PRODUCT OPTIONS & PARTS


Glaze Options		
		
White .01		

Seat Options		
	SB-242-S.01 Bolts SC-242 Caps .500 Polished Chrome .502 Polished Nickel .503 Satin Nickel .504 Polished Brass .01 White (Plastic)	S-235 (Standard)
	SB-242-S.01 Bolts SC-242 Caps .500 Polished Chrome .502 Polished Nickel .503 Satin Nickel .504 Polished Brass .01 White (Plastic)	S-232 (Duroplast)

Trim Options		
	.500 Polished Chrome .502 Polished Nickel .503 Satin Nickel .504 Polished Brass .508 Venetian Bronze	F-62 (Standard)
	.514 Satin Brass .01 White Enamel .05 Matte Black	F-65
	.01 White	MC-300 (Standard)

Metal Finish Options							
							
Polished Chrome .500	Polished Nickel .502	Satin Nickel .503	Polished Brass .504	Venetian Bronze .508	Satin Brass .514	White Enamel .01	Matte Black .05

Replacement Parts				
Fill Valve	Flush Valve	Flapper	Tank-to-Bowl Kit	Floor Bolts
VL-5801	VH-5801.16	9400.580.01	NA	Not Included

Compliance Certifications	
<ul style="list-style-type: none"> ASME A112.19.2M CSA B45.1 	 Meets the Americans With Disabilities Act (ADA) guidelines and ANSI A117.1 requirements for accessible building facilities. Check local codes.