

INSTALLATION INSTRUCTIONS

Adjustable Ceiling Escutcheon

Part #: 6019

JACLO®

Confidence from start to finish.™

FIGURE 1

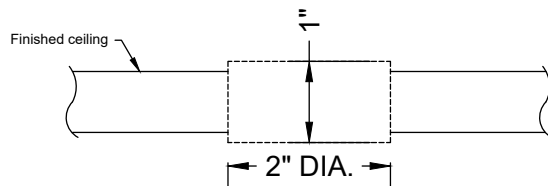


FIGURE 2

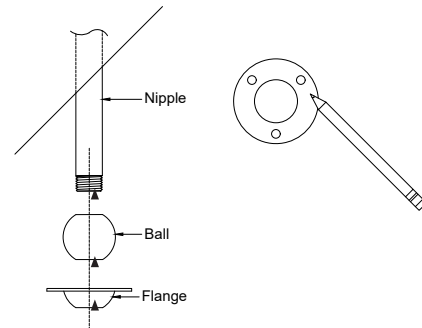


FIGURE 3

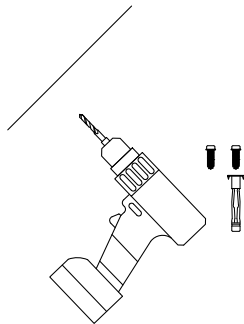


FIGURE 4

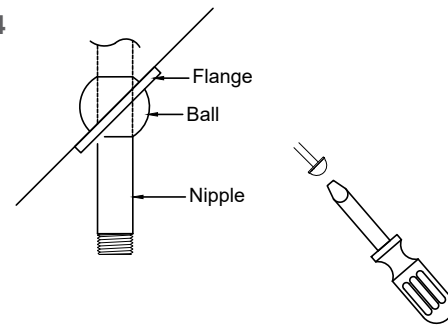
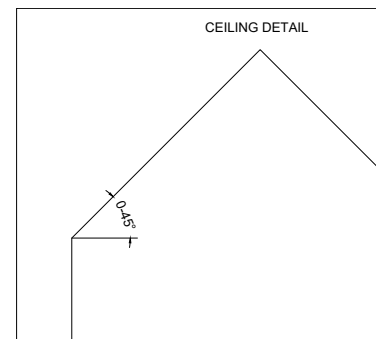
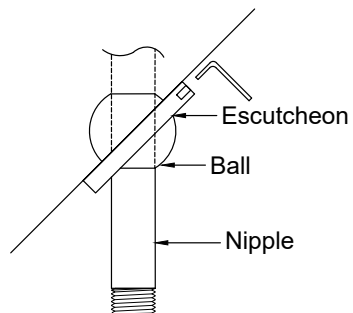


FIGURE 5



INSTALLATION

1. Hole in finished ceiling must be 2" diameter and unobstructed to a depth of 1". **See Figure 1**
2. With finished ceiling and drop nipple are installed, slide "ball" and mounting flange up to ceiling and mark the location of the three screw holes on the finished ceiling. **See Figure 2**
3. Drill holes for appropriate fastener; use self-tapping screw if ceiling is suitable or there is blocking behind sheetrock/tile. Use fasteners if installing in sheetrock or tile with sheetrock backing. **See Figure 3**
4. Slide ball and retainer up drop nipple and install retainer. **See Figure 4**
5. Slide escutcheon up drop nipple and secure set screws using Allen key supplied. **See Figure 5**
6. Min. Max. Ceiling angle is 0-45°. **See Figure 6**

To learn more about JACLO's warranty, please visit [**jaclo.com**](http://jaclo.com)