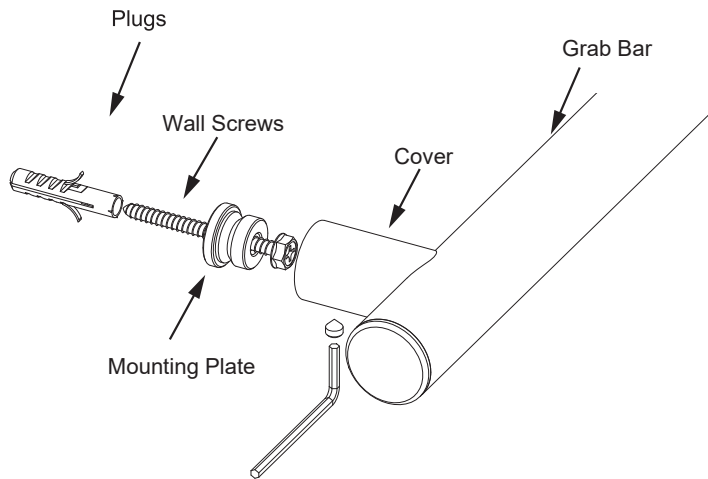


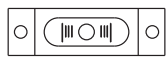
9700 SERIES (1.25"/32mm)

GRAB BAR

AVAILABLE IN: 12"/18"/24"/36"/42"
8289712/9718/9724/9736/9742



Tools required for installation



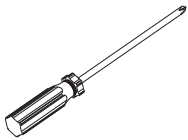
Level



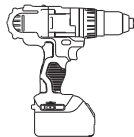
Pencil



Wrench



Screwdriver



Drill



Hammer

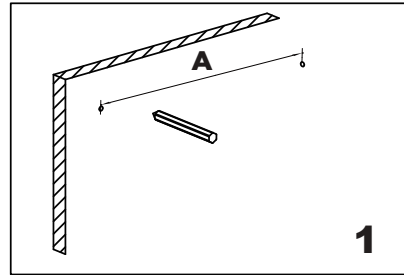
A=Plate TOP holes center to center distance

B=Plate TOP hole to BOTTOM hole distance

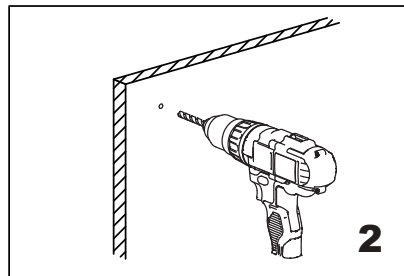
C=Plate TOP/BOTTOM holes to MID hole distance

Product Code	Sizes (Inches/mm)
	A
8289712	11 3/4" /300
8289718	17 3/4" /450
8289724	23 5/8" /600
8289736	35 1/2" /900
8289742	42 1/8" /1070

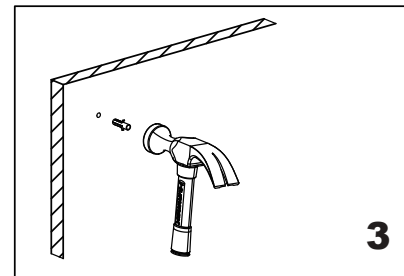
Fig.1



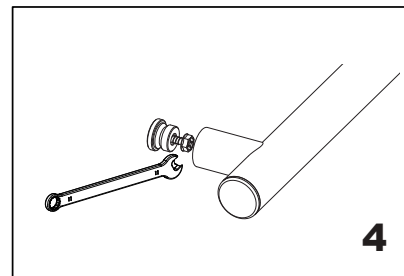
Mark (on the wall) locations of plugs through mounting plate using a pencil, refer to Fig.1



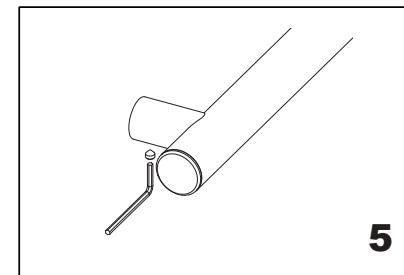
Drill 3/16" holes, make sure to keep drill level



Insert plugs into drilled holes, using a hammer to tap the plugs in, be careful not to break tile



Driver bolt nut directly into holes



Tighten the post on the Mounting plate and fix with Allen Key