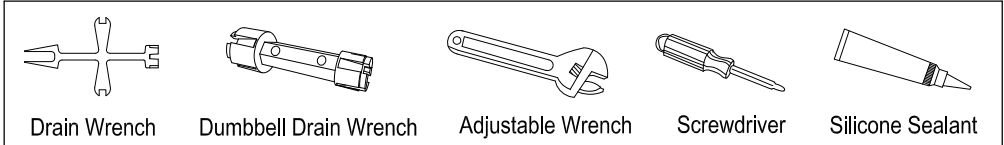


KINGSTON

KITCHEN & BATH

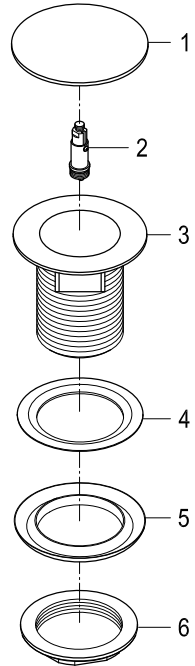
INSTALLATION INSTRUCTIONS Bathtub Drain

Need Tools:



INSTALLATION:

1. Remove old drain by unthreading drain stopper or center screw in the case of a grid drain.
2. Using one of the drain removal tools above, remove drain.
3. Clean area around the drain to remove any caulking or plumbers putty, if necessary clean using a 50/50 solution of water and vinegar and baking soda.
4. Remove stopper (1&2) by unthreading in a counterclockwise direction.
5. Apply a bead of silicone based caulking around the underside of the flange of the new drain (3).
6. Thread drain by hand to prevent any cross threading.
7. Tighten using the drain removal tool.
8. Wipe off any excess caulking.
9. Thread stopper onto Drain body.



www.kingstonbrass.com

TOLL-FREE CUSTOMER SERVICE: 1-877-2-KBRASS

TECHNICAL SUPPORT E-mail: service@kingstonbrass.com

12775 Reservoir Street, Chino, CA 91710

© 2020-11-T Kingston Brass