

Features

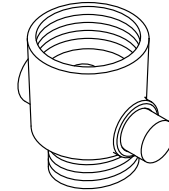
- Easily threads between handshower and hose, allowing water flow to pause via push-button functionality.
- ADA-compliant nonpositive shutoff.
- Coordinates with other products in the Statement collection.

Material

- Brass construction ensures durability and reliability.
- KOHLER finishes resist corrosion and tarnishing.

Installation

- G 1/2 inlet and outlet.



ADA

CSA B651

OBC

Codes/Standards





ADA
ICC/ANSI A117.1
CSA B651
OBC

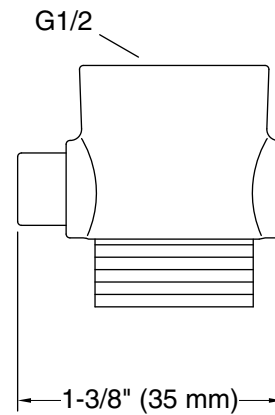
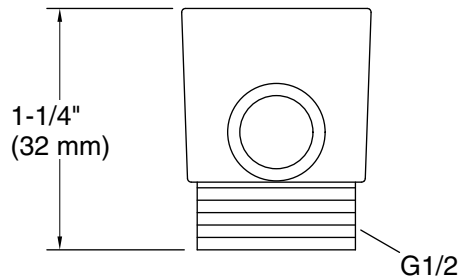
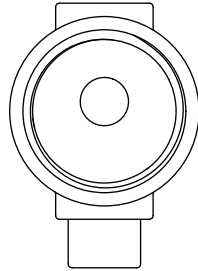
KOHLER® Faucet Lifetime Limited Warranty

See website for detailed warranty information.

Available Colors/Finishes

Color tiles intended for reference only.

Color	Code	Description
	CP	Polished Chrome
	BN	Vibrant® Brushed Nickel
	BL	Matte Black
	2MB	Vibrant® Brushed Moderne Brass



Technical Information

All product dimensions are nominal.

Notes

ADA, OBC, CSA B651 compliant when installed to the specific requirements of these regulations.