



T&S BRASS AND BRONZE WORKS, INC.
 2 Saddleback Cove / P.O. Box 1088
 Travelers Rest, SC 29690

Model No.
B-2853-RSW-061X

Item No.

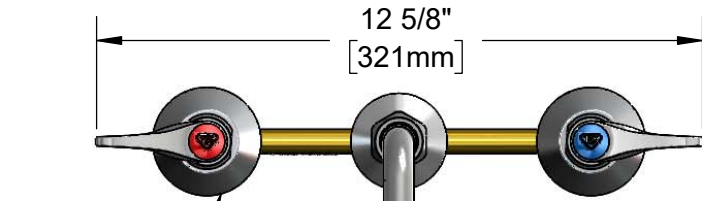
Travelers Rest, SC: 800-476-4103 • Simi Valley, CA: 800-423-0150 • Fax: 864-834-3518 • www.tsbrass.com

This Space for Architect/Engineer Approval

Job Name _____ Date _____
 Model Specified _____ Quantity _____
 Customer/Wholesaler _____
 Contractor _____
 Architect/Engineer _____



ADA Compliant



Ø2 1/4"
 [57mm]
 Escutcheons

10" Restricted Swing Nozzle
 (100° Max Swing) w/
 B-0199-06-N05
 VR 0.5 GPM Non-Aerated
 Spray Device

Quarter-Turn
 Eterna Cartridges w/
 Spring Checks &
 Lever Handles w/
 Color Coded Indexes
 & VR Screws

Ø2"
 [51mm]
 Restricted Swing
 Swivel Deck
 Flange

2 9/16"
 [65mm]

3 1/2"
 [89mm]

10"
 [254mm]

6 11/16"
 [169mm]

Mounting Surface

1 1/4"
 [32mm]
 Maximum
 Thickness

1/2" NPT
 Coupling Nuts

8"
 [203mm]

Rough-In Requirement:
 Ø1" [25mm] for Center Shank
 Ø1 1/2" [38mm] for Hot/Cold Sides

Product Specifications:

EasyInstall 8" Concealed Widespread Mixing Faucet, Quarter-Turn Eterna Cartridges w/ Spring Checks, Lever Handles, VR Screws, 10" Restricted Swing Nozzle w/ VR 0.5 GPM Non-Aerated Spray Device & 1/2" NPT Male Inlets w/ Coupling Nuts

Product Compliance:

ASME A112.18.1 / CSA B125.1
 NSF 61 - Section 9
 NSF 372 (Low Lead Content)
 ANSI A117.1 (ADA)



T&S BRASS AND BRONZE WORKS, INC.

2 Saddleback Cove / P.O. Box 1088
Travelers Rest, SC 29690

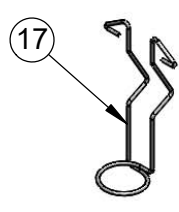
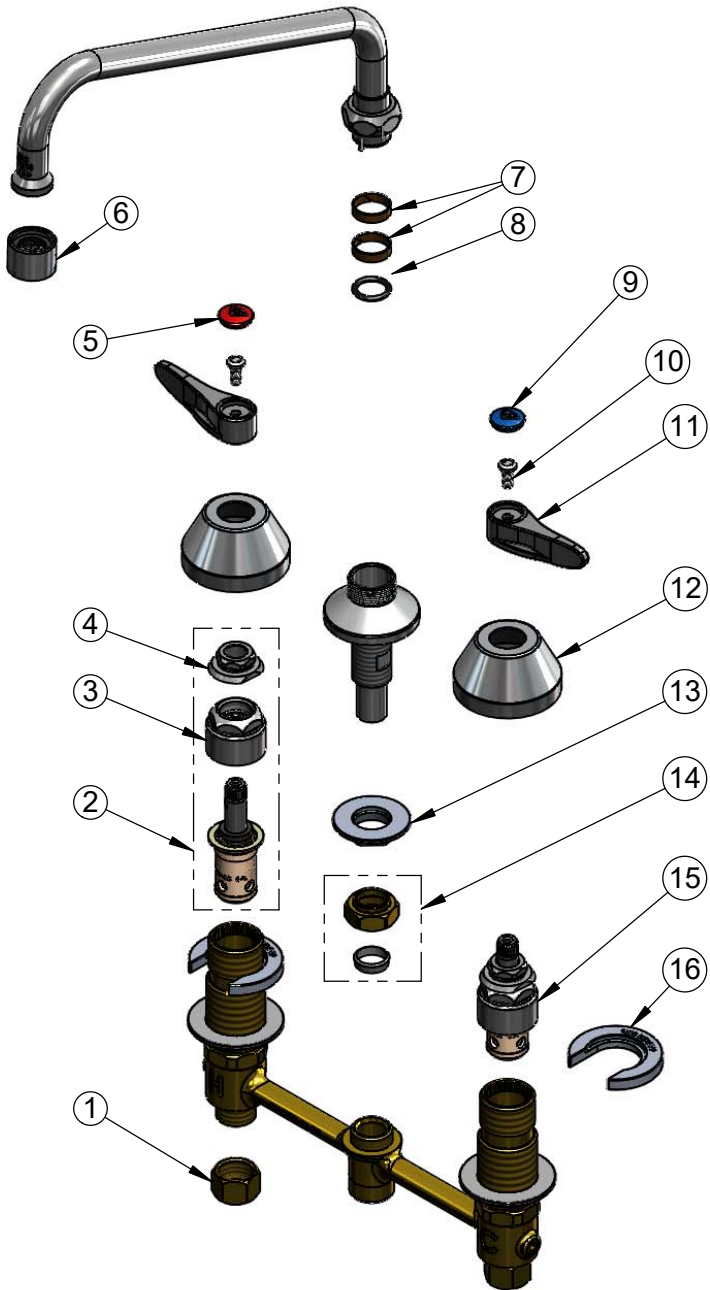
Model No.

B-2853-RSW-061X

Item No.

Travelers Rest, SC: 800-476-4103 • Simi Valley, CA: 800-423-0150 • Fax: 864-834-3518 • www.tsbrass.com

ITEM NO.	SALES NO.	DESCRIPTION
1	000958-20	Coupling Nut
2	016926-40NS	EasyInstall, CWS Quarter-Turn Eterna Cartridge w/ Spring Check, RTC
3	016743-25	CWS Eterna Bonnet
4	009002-40NS	CWS Packing Assembly
5	001193-19NS	Red Button Index, Press-in
6	B-0199-06-N05	VR 0.5 GPM Non-Aerated Spray Device, 55/64-27 UN Female w/ Key
7	011429-45	Swivel Sleeves (2)
8	001074-45	O-Ring
9	018506-19NS	Blue Button Index, Press-in
10	VRS-2	VR Wrist Action Handle Screw (2) w/ Spanner Bit
11	001638-45NS	Lever Handle (New Style)
12	001257-40NS	Bell Escutcheon
13	016742-45	Center Flange Nut
14	016745-45	Compression Nut & Fitting
15	016925-40NS	EasyInstall, CWS Quarter-Turn Eterna Cartridge w/ Spring Check, LTC
16	016749-45	Sidebody C-Washer
17	016777-45	CWS Hanger



014075-45
#10 Spanner Bit



015425-45
Vandal Resistant Key

017245-40
Installation Repair Kit
Includes #15, (2) #18, & #19

Product Specifications:

EasyInstall 8" Concealed Widespread Mixing Faucet, Quarter-Turn Eterna Cartridges w/ Spring Checks, Lever Handles, VR Screws, 10" Restricted Swing Nozzle w/ VR 0.5 GPM Non-Aerated Spray Device & 1/2" NPT Male Inlets w/ Coupling Nuts

Product Compliance:

ASME A112.18.1 / CSA B125.1
NSF 61 - Section 9
NSF 372 (Low Lead Content)
ANSI A117.1 (ADA)